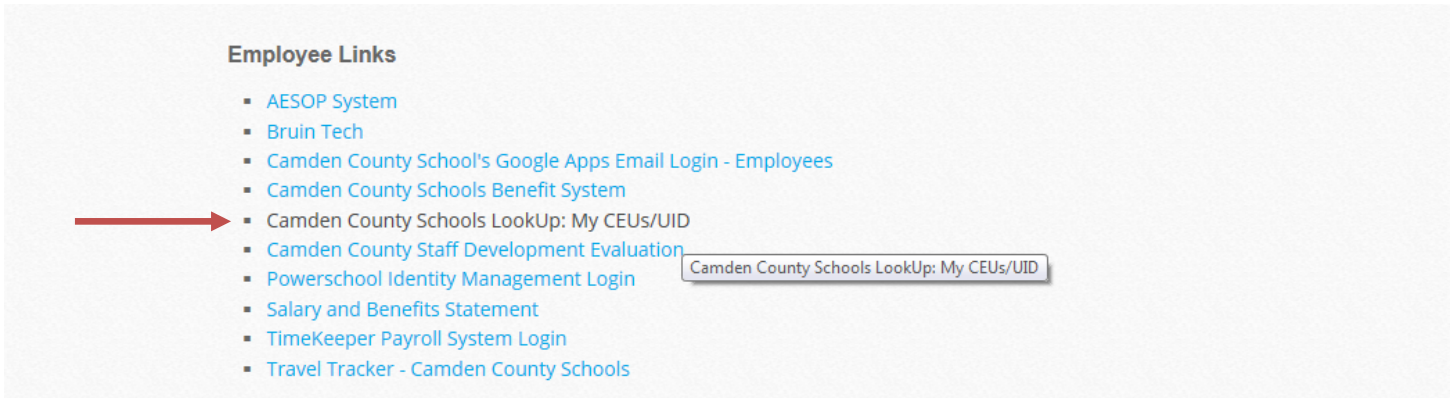


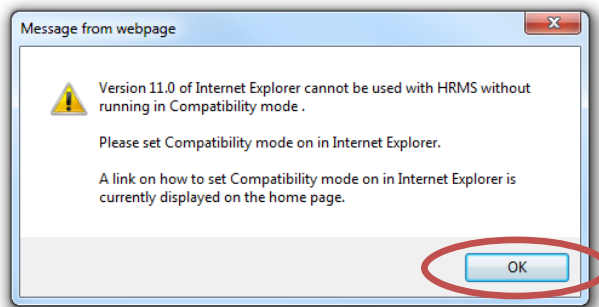
Checking the CEU in Internet Explorer

You must use Internet Explorer for your browser. It doesn't work with Chrome or Firefox.

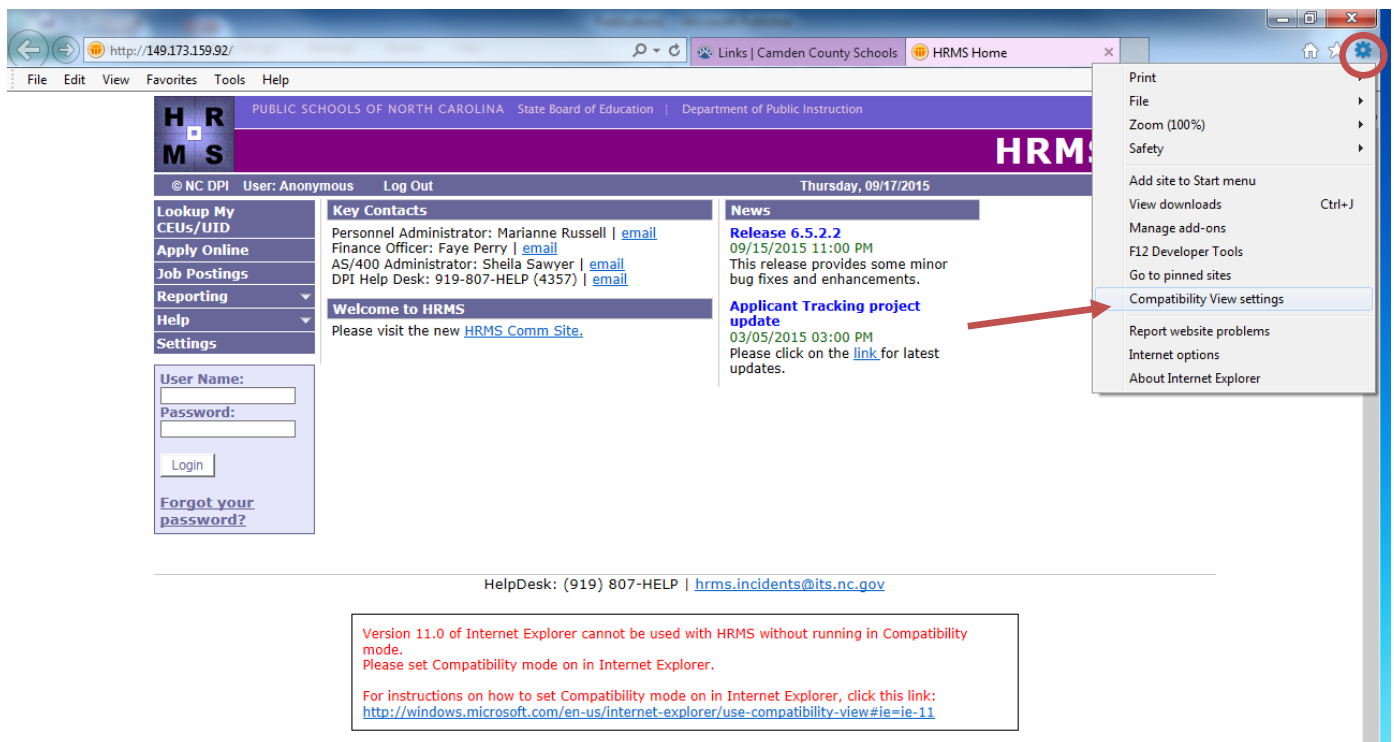
Go to <http://149.173.159.92/> or click on the My CEUs/UID link on our website's link page: <http://ccsnc.org/information/links/>



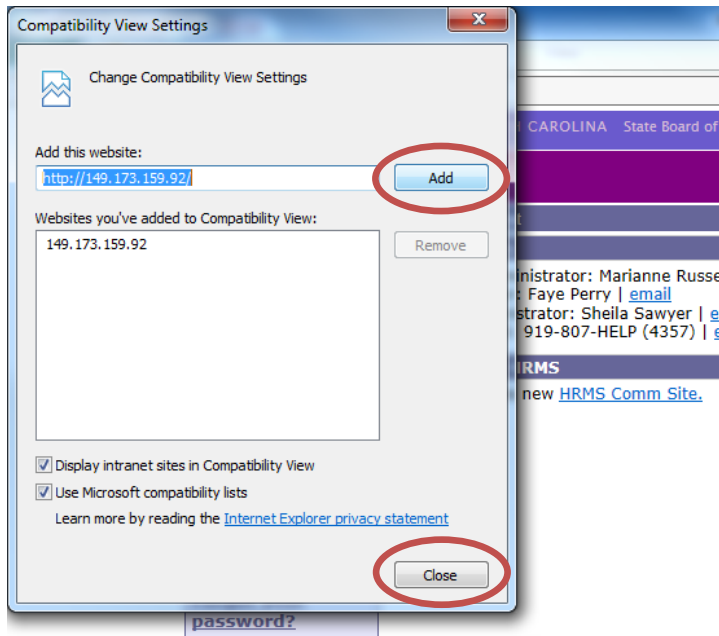
If you get the Compatibility Mode error.



Then you will see a warning about "Compatibility Mode" at the bottom of the page. Click the **Gear icon** in the upper right part of the header, then click **Compatibility Mode settings**.



Click **Add** to add <http://149.173.159.92/> to the list of websites. Then click on **Close** in the bottom of the window.



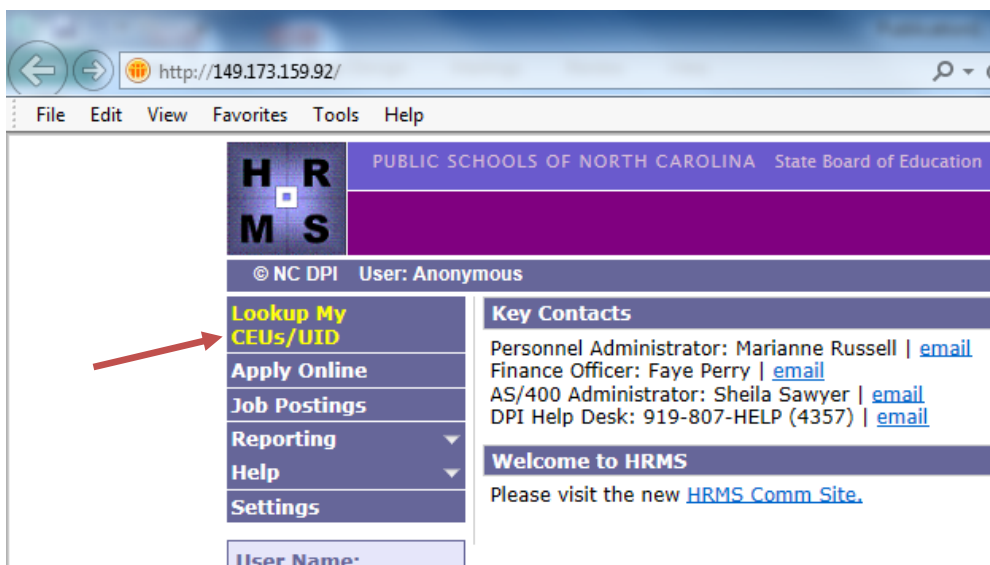
HelpDesk: (919)

Version 11.0 of Internet Explorer can
mode.
Please set Compatibility mode on in
For instructions on how to set Comp
<http://windows.microsoft.com/en-us>

The page should refresh on its own, if not click the **Refresh** icon in the tool bar.

The red warning box at the bottom of the page should go away.

Then click on the **Lookup My CEUs/UID** link on the top left side of the page.



It will take you to the page where you can enter your information to look up your CEUs.

http://149.173.159.92/hrms/ceu.nsf/ceuhistory?openform

Links | Camden County Sc... HRMS Home Lookup My CEU's

File Edit View Favorites Tools Help

Continuing Education Employee History

Enter SSN:

Enter Payroll Emp ID:

UID:

Totals

Period	Start	End	Total CEU Credits	Content Credits	Literacy Credits	Other Credits	School Admin Credits	Tech Credits
Current								
Prior								
Future		-						
Lifetime	-	-						

Class History List

Class Code	Source	Date	CEU Cred	Sem Hrs	Cont Cred	Lit Cred	Other Cred	SAdm Cred	Tech Cred	HQ	No Credit?	Description
------------	--------	------	----------	---------	-----------	----------	------------	-----------	-----------	----	------------	-------------